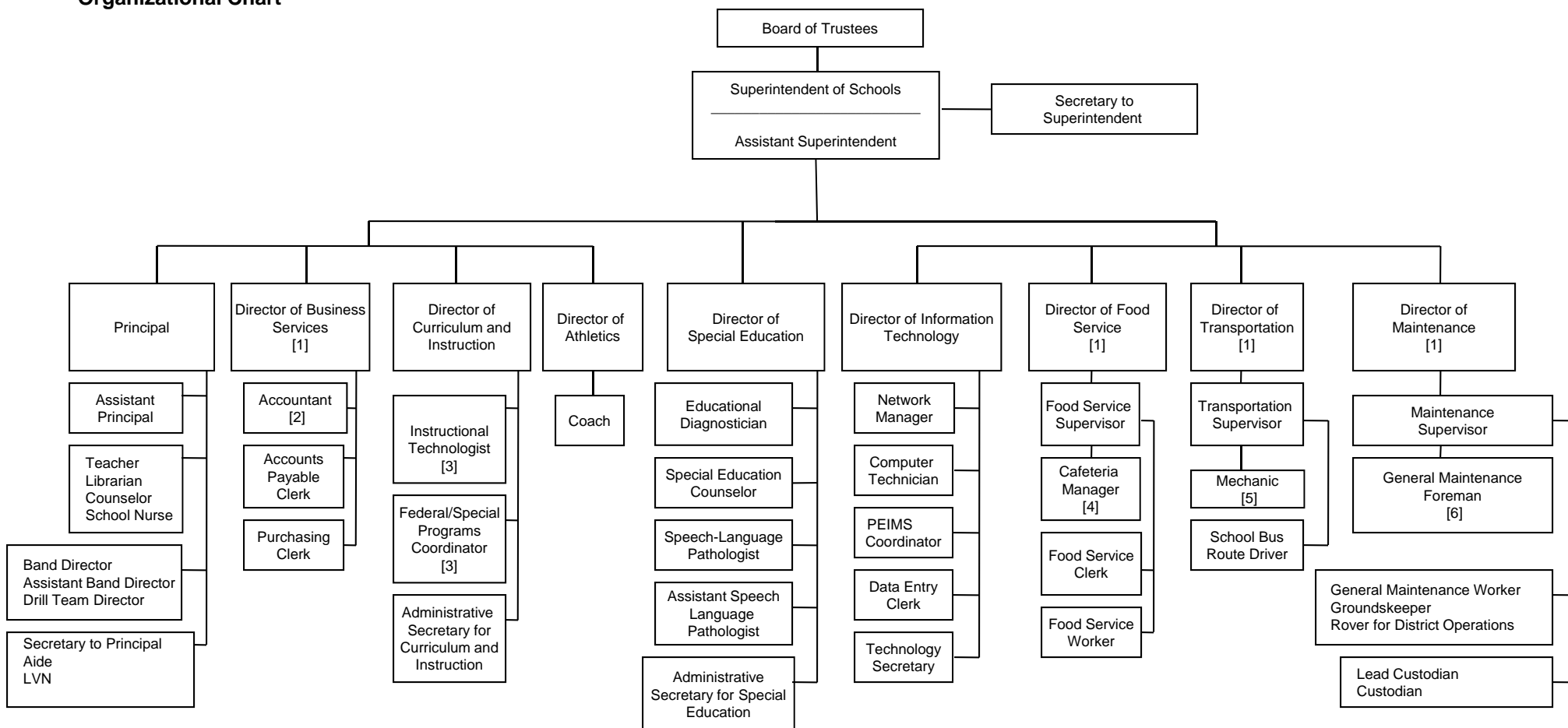


DUBLIN ISD

Organizational Chart



Footnotes:

[1] The Major Responsibilities and Duties and Supervisory Responsibilities for the position, which is not a board approved position, are assumed by the Assistant Superintendent.

[2] The Major Responsibilities and Duties and Supervisory Responsibilities for the position, which is not a board approved position, are currently provided by a contract service agreement; however, if the Director of Business Services was a full-time employee, he or she would also perform the duties of the accountant.

[3] The Major Responsibilities and Duties and Supervisory Responsibilities for the position, which is not a board approved position, are assumed by the Director of Curriculum and Instruction.

[4] The Major Responsibilities and Duties and Supervisory Responsibilities for the position, which is not currently filled, are assumed by the Food Service Supervisor.

[5] The Major Responsibilities and Duties and Supervisory Responsibilities for the position, which is not currently filled, are assumed by the Transportation Supervisor; however, most of the maintenance and repair work is performed by contract labor because the Transportation Supervisor is also the Maintenance Supervisor.

[6] The Major Responsibilities and Duties and Supervisory Responsibilities for the position, which is not currently filled, are assumed by the Maintenance Supervisor.